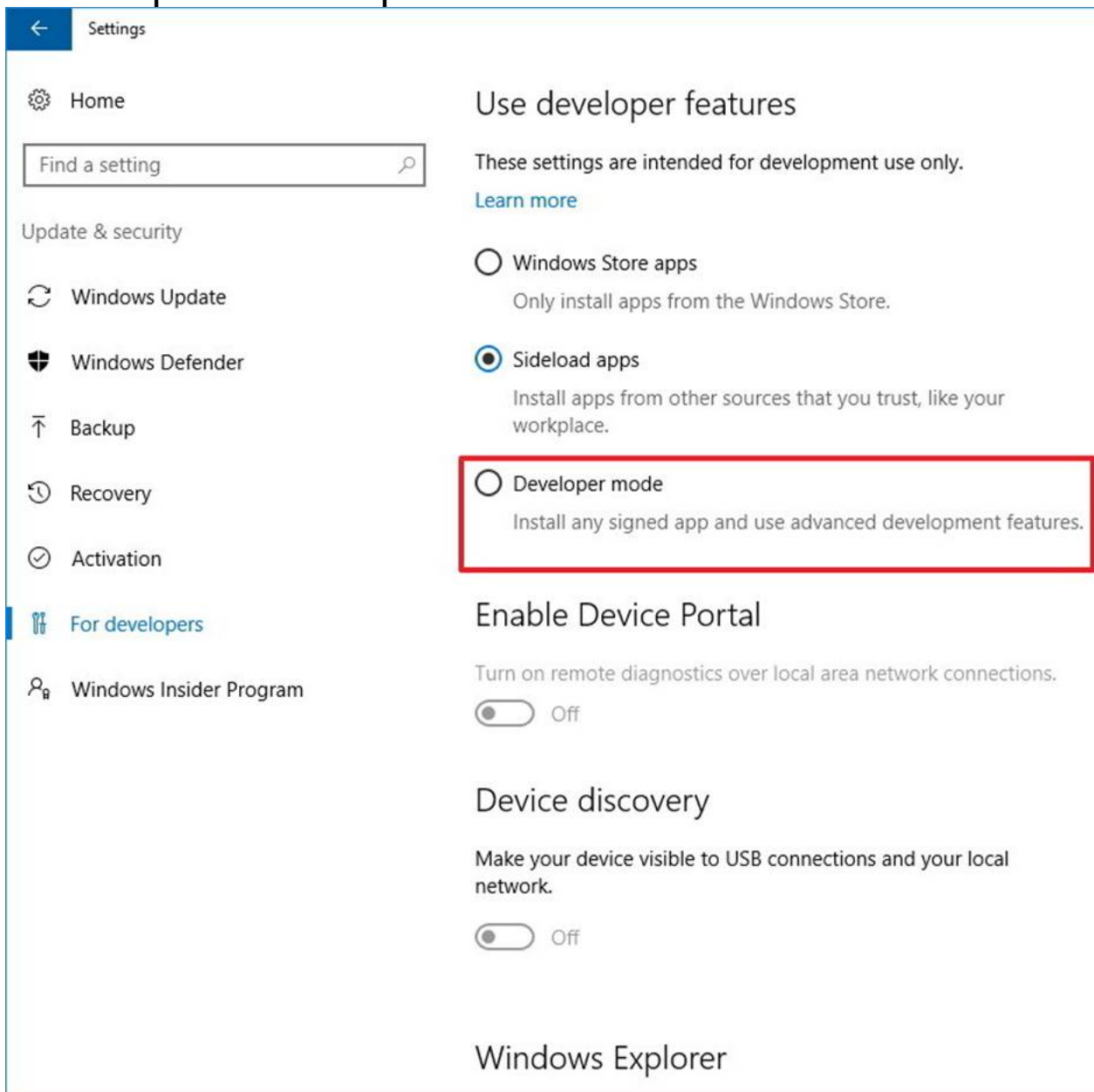
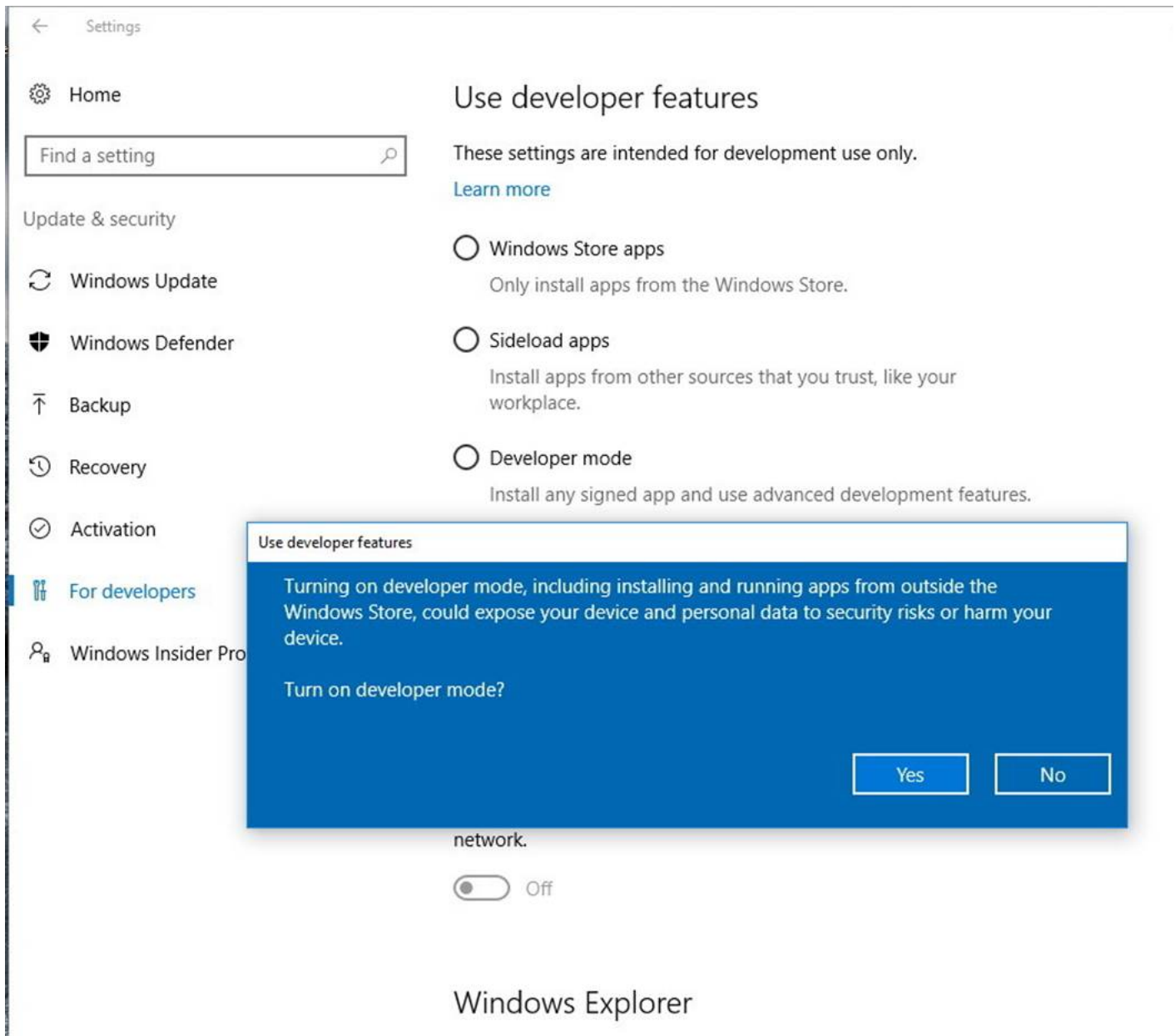


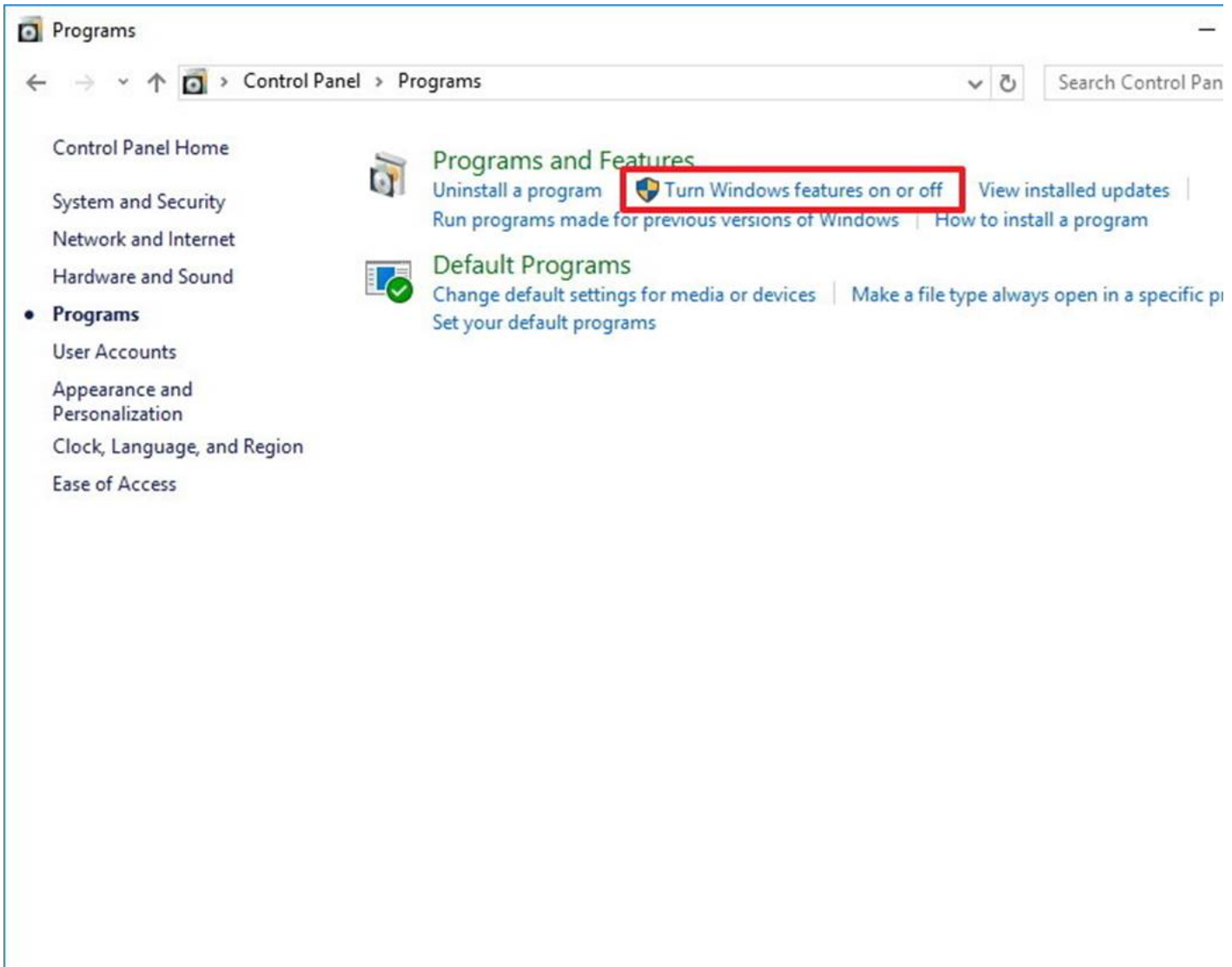
1. Open **Settings**.
2. Click on **Update & security**.
3. Click on **For Developers**.
4. Under "Use developer features", select the **Developer mode** option to setup the environment to install Bash.



5. On the message box, click **Yes** to turn on developer mode.

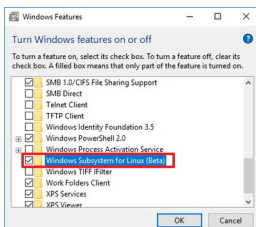


6. After the necessary components install, you'll need to restart your computer.
7. Once your computer reboots, open **Control Panel**.
8. Click on **Programs**.
9. Click on **Turn Windows features on or off**.



10. Check the **Windows Subsystem for Linux (beta)** option.

11. Click **OK**.



12. Once the components installed on your computer, click the **Restart now** button to complete the task.

Best regards Frederik